



**GENERAL PURPOSE MAT**



[Learn More!](#)



## Description

Skudo General Purpose (GP) Plus Mat can be applied as a loose lay protection system alone or in combination with SkudoBoard for commercial and residential projects. The GP Plus Mat is a highly durable product for protecting concrete, while allowing the slab underneath to breathe, reducing the risk of hydration (cure) lines.

Simply loose lay the GP Plus Mat out over the surface, overlapping where the edges of the matting meet, and tape along the seams to block debris, materials and spills from damaging the surface. If additional protection is needed, place the SkudoBoard right on top of the GP Plus Mat and tape to secure. *(See the following page for full installation instructions.)*

Skudo GP Plus Mat is designed to protect surfaces from damage for up to 12 months.

## Uses

GP Plus Mat can be used on the following substrates:

Concrete\*, Polished Concrete, Sheet Vinyl, Terrazzo\*, Tile\*, Stone\*, Laminate, Epoxy, Hardwood, Carpet, Glass & Metal, Countertops, Joinery & more

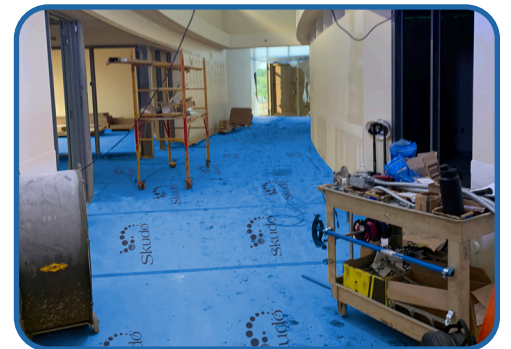
*\*Speak with your Skudo Representative to confirm substrate suitability.*

Protects most surfaces, including freshly placed concrete as early as 14 days.\*

*\*Note: This is subject to slab thickness, mix design, weather, etc. Please contact your Skudo Rep to determine suitability. (Please note: Ensure the surface pH is below 11.0 and relative humidity (RH) is 80% or lower prior to placing protection over the slab. We recommend moisture testing with a moisture meter, such as a Wagner Meter).*

## Benefits

- Reliable surface protection for heavy foot traffic, equipment carts, and ladders
- Breathable system
- Superior spill, stain, and water resistance
- Resistance to UV, rust, impact, and welding splatter
- Class 1 Fire/Flame retardant according to ASTM E 648 and NFPA 253 standards.
- Antibacterial/Antifungal: Test-verified protection against bacteria and molds that cause infection. (ISO-20743)
- Safer working surface
- High slip resistance in wet and dry conditions
- Seamless and stationary



Protected in the United States by patent #10190004  
Canada patent #2850385

**Innovative, purpose-built surface protection systems. This is all we do.**

[www.skudousa.com](http://www.skudousa.com) 1-888-SKUDO-11 (1-888-758-3611)



Learn More!



## Installation Steps

*IMPORTANT: As freshly placed concrete can be subject to hydration marks on the surface from inconsistent/uneven curing, it is recommended to wait a minimum of at least ten days before installation. Examples of variables that affect the covering timing are slab thickness, mix design, location, and weather. For assistance, please reach out to your local Skudo rep for clarification.*

1. Ensure your surface is clean and dry before you lay Skudo GP Plus Mat.
2. Roll out in a straight line to create the first row.
3. When starting the second row, ensure to overlap the first row of matting, using the dotted lines as a guide.
4. Tape along the seams to secure the mat to itself, preventing dust, dirt, and debris from getting in underneath. Do not tape the edges to the substrate. (*\*Note: Use Skudo breathable tape if protecting concrete or unfinished or oiled hardwood floors.*)
5. Complete each row as above until your surface is covered.
6. For additional impact protection, we recommend placing SkudoBoard over the top of the GP Plus Mat. When placing the SkudoBoard over the GP Plus Mat, run the boards in the opposite direction or in a brick pattern to not line up the seams with those of the mat.
7. We also recommend sufficiently securing/weighing down the mat/board around the perimeter of the protected area when used externally to minimize risk of displacement due to wind and extreme weather events. (*Note: Some builders install the GP Plus Mat immediately before framing and frame directly over the edges, effectively holding it in place during construction.*)
8. When installing loose lay (dry lay) over new concrete, avoid excessive taping on the overlap of the matting, to assist with minimizing the possibility of hydration marks.



**Innovative, purpose-built surface protection systems. This is all we do.**

[www.skudousa.com](http://www.skudousa.com) 1-888-SKUDO-11 (1-888-758-3611)